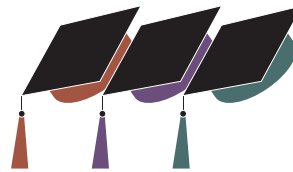


# College Choice Analysis™



Prepared for  
**Andrea Sample**

This report is being provided to you to help you identify colleges with the characteristics most important to you. We do not endorse, recommend, or guarantee the quality of any school listed in this report. The information contained in this report has been provided by the schools themselves. Since the information is subject to change, families should be sure to visit or contact the schools to verify that programs are available and that information about the schools, including cost, is correct.

## I. Your Colleges At A Glance

### General Information

School	Total Cost	Type
<b>Boston University</b> Boston, MA 02215 617-353-3200	\$34,978	Private 4 Years
<b>Carnegie Mellon University</b> Pittsburgh, PA 15213-3890 412-268-8200	\$33,636	Private 4 Years
<b>Clemson University</b> Clemson, SC 29634-5124 803-656-6331	\$14,514	Public 4 Years
<b>Duke University</b> Durham, NC 27708 919-684-4321	\$34,396	Private 4 Years
<b>Lafayette College</b> Easton, PA 18042-1770 215-250-0510	\$32,740	Private 4 Years
<b>Miami University, Oxford Campus</b> Oxford, OH 45056 513-529-9180	\$19,993	Public 4 Years
<b>Tufts University</b> Medford, MA 02155 617-627-7317	\$34,969	Private 4 Years
<b>Union College</b> Schenectady, NY 12308 518-388-8600	\$31,809	Private 4 Years
<b>University of Illinois, Urbana Champaign</b> Urbana, IL 61801 217-333-3100	\$18,442	Public 4 Years
<b>University of Michigan</b> Ann Arbor, MI 48104-2210 313-764-4181	\$26,103	Public 4 Years

The total cost is the cost per year for tuition, room and board, and all mandatory fees. For publicly supported institutions, out-of-state tuition rates are used if the applicant's address or legal residence, as identified on the questionnaire, differs from the state where the school is located.

Cost information is the latest supplied by the schools. Because costs are steadily increasing, you may want to assume that costs will rise between five and six percent for each year between now and when the applicant actually goes to college.

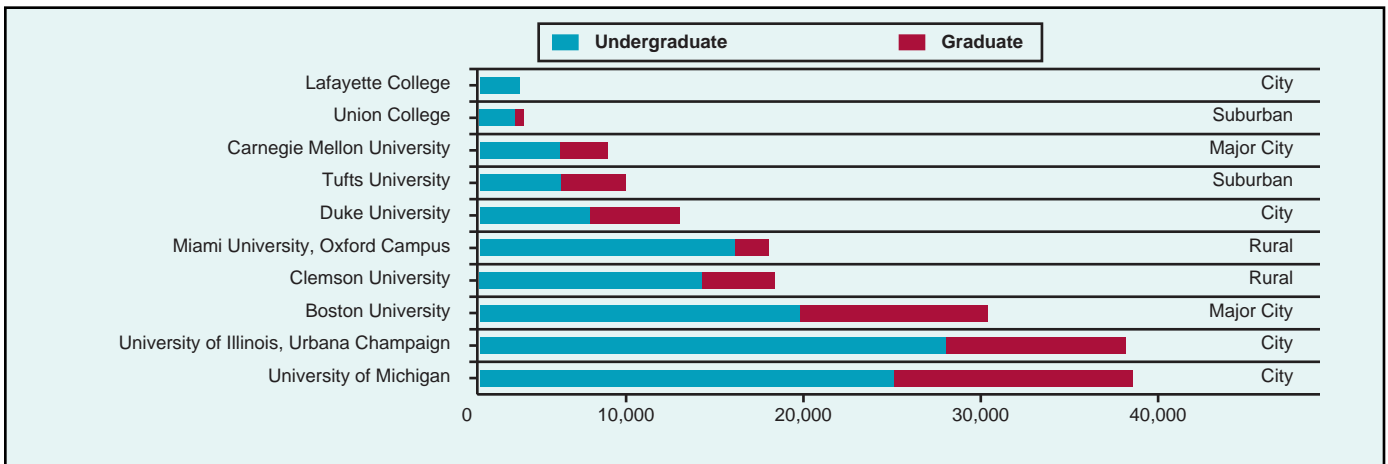
## General Information (continued)

School	Year Founded	Admission Application Deadline	Degrees Offered
<b>Boston University</b> WWW: www.bu.edu Email:admissions@bu.edu	1839	January 15	B, M, D
<b>Carnegie Mellon University</b> WWW: www.cmu.edu Email:undergraduate-admissions@andrew.cmu.edu	1900	January 15	B, M, D
<b>Clemson University</b> WWW: www.clemson.edu Email:admissions@clemson.edu	1889	May 1	B, M, D
<b>Duke University</b> WWW: www.duke.edu Email:askduke@admiss.duke.edu	1838	January 2	B, M, D
<b>Lafayette College</b> WWW: www.lafayette.edu Email:admissions@lafayette.edu	1826	January 15	B
<b>Miami University, Oxford Campus</b> WWW: www.muohio.edu Email:admission@muohio.edu	1809	January 31	B, M, D
<b>Tufts University</b> WWW: www.tufts.edu Email:uadmiss_inquiry@infonet.tufts.edu	1852	January 1	B, M, D
<b>Union College</b> WWW: www.union.edu Email:admissions@union.edu	1795	February 1	B, M
<b>University of Illinois, Urbana Champaign</b> WWW: www.uiuc.edu Email:admission@uiuc.edu	1867	January 1	B, M, D
<b>University of Michigan</b> WWW: www.imich.edu Email:ugadmiss@umich.edu	1817	February 1	B, M, D

**Degrees Offered** is coded as follows: **A**=Associate, **B**=Bachelor's, **M**=Master's, **D**=Doctorate. The **Admission Application Deadline** is for fall term.

# I. How Do These Colleges Compare?

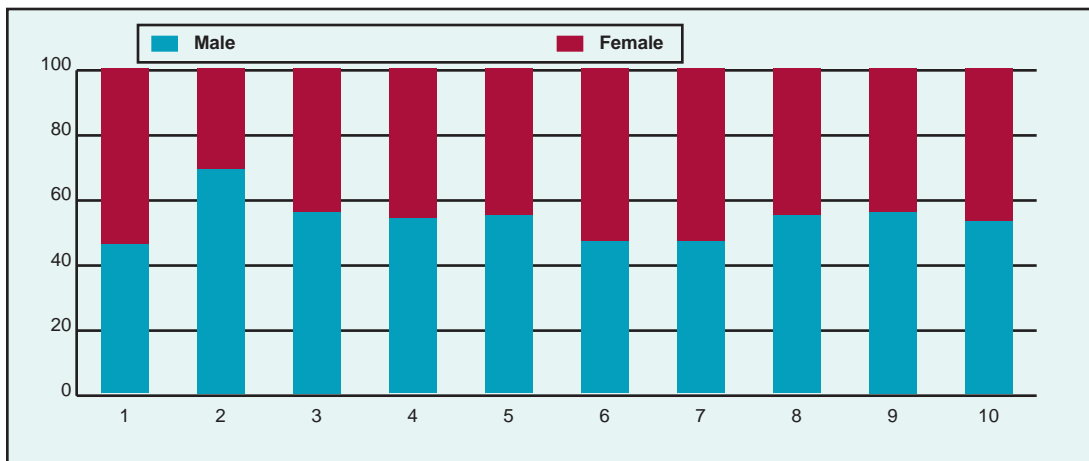
## Size and Setting



Your colleges are graphed from smallest to largest. Which would you prefer?

## Enrollment Composition

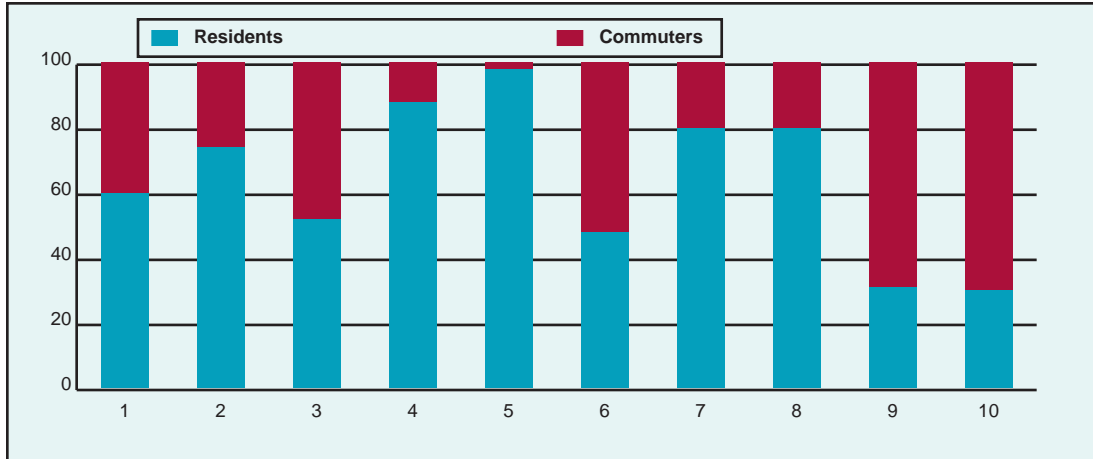
1. Boston University	6. Miami University, Oxford Campus
2. Carnegie Mellon University	7. Tufts University
3. Clemson University	8. Union College
4. Duke University	9. University of Illinois, Urbana Champaign
5. Lafayette College	10. University of Michigan



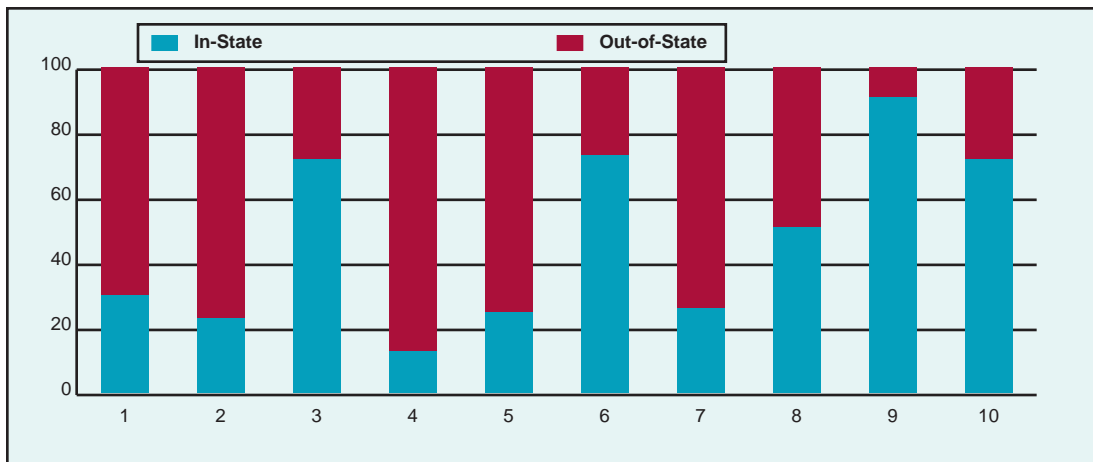
## Enrollment Composition

1. Boston University	6. Miami University, Oxford Campus
2. Carnegie Mellon University	7. Tufts University
3. Clemson University	8. Union College
4. Duke University	9. University of Illinois, Urbana Champaign
5. Lafayette College	10. University of Michigan

## Residents/Commuter Ratio



## In-State/Out-of-State Ratio



### Cultural Diversity

School	White	Asian	Hispanic	Black	Native American	Other
Carnegie Mellon University	56	15	3	3	0	23
Duke University	68	14	5	10	1	2
Boston University	72	15	6	4	0	3
University of Michigan	73	10	4	8	1	4
Tufts University	73	11	4	4	0	8
University of Illinois, Urbana Champaign	74	12	5	7	0	2
Union College	85	6	3	3	0	3
Clemson University	88	1	1	9	0	1
Lafayette College	91	3	2	4	0	0
Miami University, Oxford Campus	94	2	1	3	0	0

### Faculty Accessibility

School	Student/Professor Ratio
Duke University	5 to 1
Carnegie Mellon University	7 to 1
Lafayette College	12 to 1
Union College	13 to 1
Boston University	14 to 1
Tufts University	14 to 1
Clemson University	17 to 1
Miami University, Oxford Campus	19 to 1
University of Illinois, Urbana Champaign	N/A
University of Michigan	N/A

The Student/Professor Ratio may be an indicator of faculty accessibility and class size. A lower ratio implies greater access to faculty and smaller classes. An "-NA-" means this information was not available.

### Most Popular Undergraduate Majors

School	General Major Category
Boston University	19% Business and Management, 18% Social Sciences, 15% Communications, 7% Engineering, 7% Psychology
Carnegie Mellon University	27% Engineering, 16% Visual and Performing Arts, 14% Business and Management, 10% Mathematics, 7% Letters
Clemson University	22% Business and Management, 20% Engineering, 14% Education, 7% Social Sciences, 6% Allied Health
Duke University	30% Social Sciences, 16% Letters, 14% Engineering, 11% Life Sciences, 8% Psychology
Lafayette College	73% Social Sciences, 21% Engineering, 10% Life Sciences, 8% Letters, 8% Psychology
Miami University, Oxford Campus	29% Business and Management, 15% Social Sciences, 12% Education, 6% Letters, 6% Life Sciences
Tufts University	N/A
Union College	30% Social Sciences, 13% Engineering, 10% Life Sciences, 8% Letters, 8% Multi/Interdisciplinary Studies
University of Illinois, Urbana Champaign	17% Engineering, 16% Business and Management, 12% Social Sciences, 8% Life Sciences, 7% Letters
University of Michigan	10% Psychology, 8% Letters, 6% Life Sciences, 5% Business and Management, 5% Engineering

### III. How Hard Is It To Get In?

You can measure how hard it is to get into a college by looking at the number of applicants accepted out of all whom apply. The smaller the percentage accepted, the more likely that even excellent students are passed over in the first round of acceptances.

#### Percent of Applicants Offered Admission

School	% Admitted	
Duke University	28	About 1 out of 4
Tufts University	32	About 1 out of 3
Carnegie Mellon University	47	About 1 out of 2
Boston University	53	More than half
Lafayette College	53	More than half
Union College	55	More than half
University of Michigan	68	About 2 out of 3
University of Illinois, Urbana Champaign	70	About 3 out of 4
Miami University, Oxford Campus	72	About 3 out of 4
Clemson University	78	About 3 out of 4

The percentage of applicants admitted provides an indication of how selective a college may be.

#### Percent of Admitted Students Who Enroll

School	% Admitted
University of Illinois, Urbana Champaign	49
Duke University	44
Clemson University	41
Miami University, Oxford Campus	40
University of Michigan	40
Tufts University	32
Union College	31
Boston University	29
Lafayette College	24
Carnegie Mellon University	22

This table shows the percentage of those students who were offered admission who subsequently enrolled in the institution.

#### SAT Verbal Scores of Accepted Freshmen

School	AVG	700's	600's	500's	400'	Below
Duke University	690	47	42	10	1	0
Tufts University	660	N/A	N/A	N/A	N/A	N/A
Boston University	631	3	25	47	24	2
Andrea Sample	610	Your Score				
University of Illinois, Urbana Champaign	608	N/A	N/A	N/A	N/A	N/A
Lafayette College	605	2	22	49	24	3
Union College	600	N/A	N/A	N/A	N/A	N/A
Carnegie Mellon University	N/A	6	31	41	16	6
Clemson University	N/A	1	5	35	46	11
Miami University, Oxford Campus	N/A	1	13	46	38	2
University of Michigan	N/A	3	26	44	23	4

Your verbal score of 610 was above or equal the average SAT score of 3 of the schools and below the average SAT score of 3 of the schools.

## SAT Math Scores of Accepted Freshmen

School	AVG	700's	600's	500's	400'	Below
Duke University	700	53	39	7	1	0
Tufts University	680	N/A	N/A	N/A	N/A	N/A
Lafayette College	645	21	47	27	5	0
University of Illinois, Urbana Champaign	640	N/A	N/A	N/A	N/A	N/A
Andrea Sample	630	Your Score				
Boston University	630	13	39	38	9	1
Union College	620	N/A	N/A	N/A	N/A	N/A
Carnegie Mellon University	N/A	47	38	13	2	0
Clemson University	N/A	6	28	47	17	2
Miami University, Oxford Campus	N/A	9	38	43	9	1
University of Michigan	N/A	27	43	23	6	1

Your Math SAT score of 630 was above or equal the average SAT score of 2 of the schools and below the average SAT score of 4 of the schools.

## High School Class Rankings of Accepted Freshmen

School	Top Tenth 1-10%	Next 15% 11-25%	2nd Quartile 26-50%	Bottom Half 51-100%
Duke University	90	5	5	0
Carnegie Mellon University	65	28	7	0
Tufts University	63	28	8	1
University of Michigan	61	29	9	1
Boston University	55	33	11	4
University of Illinois, Urbana Champaign	50	35	14	1
Union College	46	36	17	2
Miami University, Oxford Campus	38	42	17	3
Lafayette College	35	36	25	6
Clemson University	31	32	30	5

Use the high school class rank information to evaluate where you would stand among the accepted freshmen at each of the schools shown.

### III. How Hard Is It To Stay In?

#### First Year Retention Rate

School	% Returning As Sophomores
Duke University	97
Tufts University	96
University of Michigan	94
University of Illinois, Urbana Champaign	91
Carnegie Mellon University	90
Lafayette College	90
Boston University	84
Clemson University	83
Miami University, Oxford Campus	N/A
Union College	N/A

The first-year retention rates are graphed from highest to lowest. Retention rates may reflect students' level of satisfaction with the institution and the level of success that they had during the freshman year.

#### Overall Retention Rate

School	% of Freshman Graduating Within Five Years
Duke University	94
Lafayette College	89
Tufts University	89
University of Michigan	85
Miami University, Oxford Campus	83
University of Illinois, Urbana Champaign	77
Boston University	71
Carnegie Mellon University	68
Clemson University	63
Union College	N/A

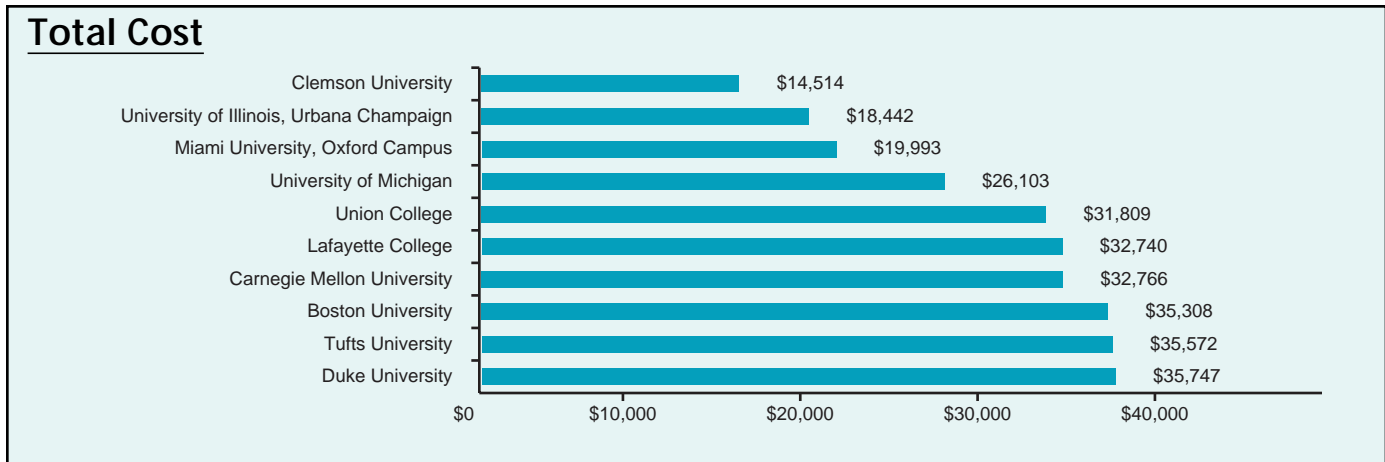
The overall retention rates are based on a five-year graduation rate to accommodate students deciding to take a year off before finishing college.

#### Most Likely to Lead to Graduate School

School	% of Graduates Entering Grad School Within Five Years
Clemson University	59
Miami University, Oxford Campus	52
University of Illinois, Urbana Champaign	42
Duke University	38
Tufts University	36
Carnegie Mellon University	28
Lafayette College	27
Boston University	N/A
Union College	N/A
University of Michigan	N/A

Continuation to graduate school percentages indicate one measure of the academic caliber of the schools; a higher percentage implies a more academically-oriented school.

### III. What Will It Cost?



Your colleges are graphed from least expensive to most expensive. Total cost includes tuition, room, board, and all mandatory fees. On average, college costs are rising about 5-6% annually.

### Financial Aid

School	% Receiving Financial Aid	Average Total Aid Package	Average Need-Based Grant	% Receiving Self-Help Aid (Jobs/Loans)
<b>University of Illinois, Urbana Champaign</b>	84	\$6,475	N/A	44
<b>Boston University</b>	63	\$19,249	\$13,750	43
<b>Carnegie Mellon University</b>	63	\$15,165	\$10,492	55
<b>Lafayette College</b>	60	\$16,400	\$12,000	36
<b>Miami University, Oxford Campus</b>	60	\$8,846	\$3,476	21
<b>Clemson University</b>	55	\$7,904	\$4,001	N/A
<b>Union College</b>	45	\$18,480	\$14,000	54
<b>Duke University</b>	43	\$19,995	\$15,073	N/A
<b>Tufts University</b>	41	\$19,785	N/A	34
<b>University of Michigan</b>	N/A	\$10,650	\$4,270	37

The financial aid percentages are based on the total number of undergraduates. The averages are based on the number of undergraduates receiving the designated type of aid. Grants are awards that do not need to be repaid. Self-help aid is funds from jobs (work-study) and loans.